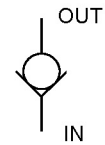


SYMBOL

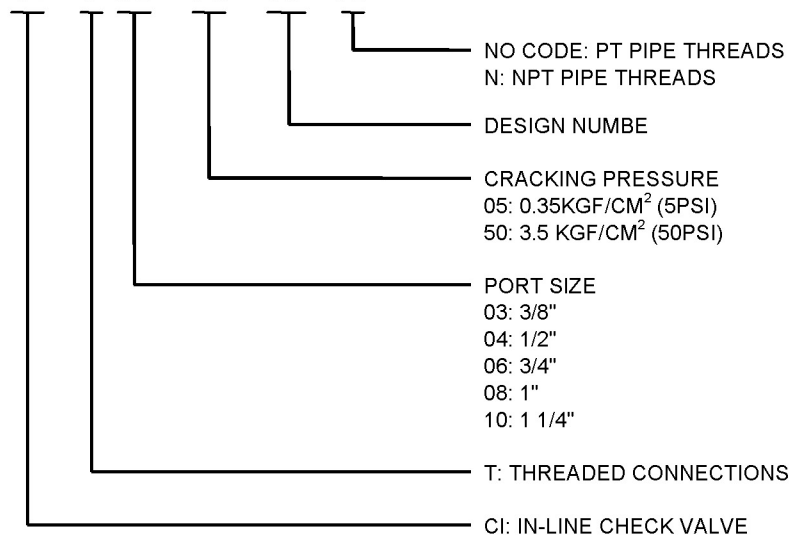


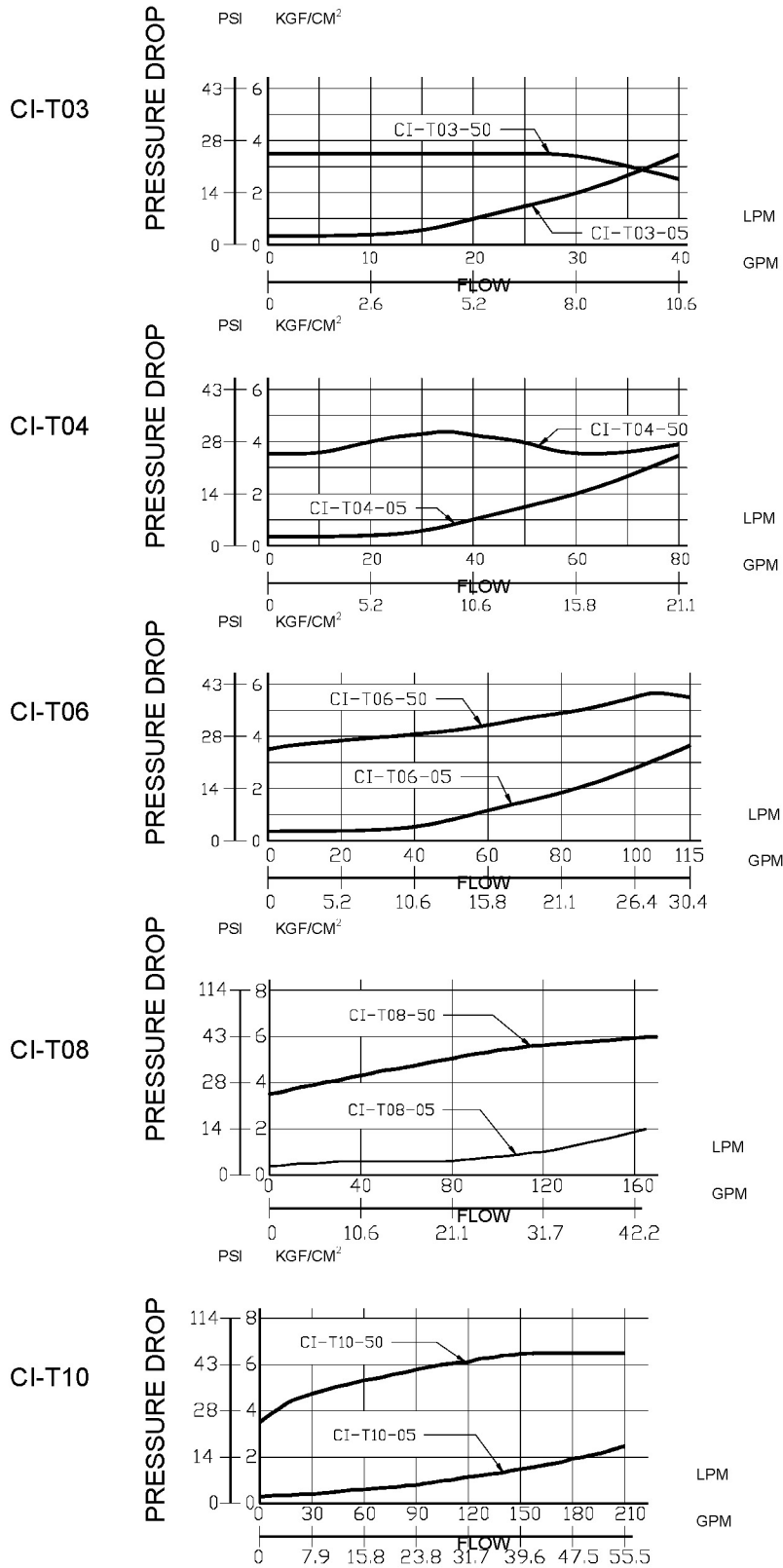
SPECIFICATIONS

MODEL	RATE FLOW LPM(GPM)	MAX. OPERATED PRESSURE KGF/CM ² (PSI)	CRACKING PRESSURE KGF/CM ² (PSI)
CI-T03	30(7.9)	210(3000)	05: 0.35(5) 50: 3.5(50)
CI-T04	65(17.1)		
CI-T06	115(30.4)		
CI-T08	165(43.6)		
CI-T10	210(55.5)		

HOW TO ORDER

CI - T 03 - 05 - 10 - N

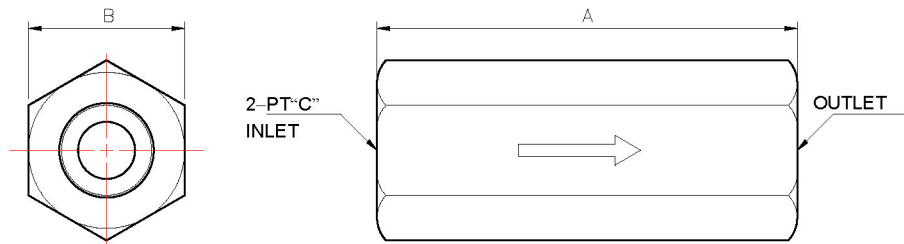




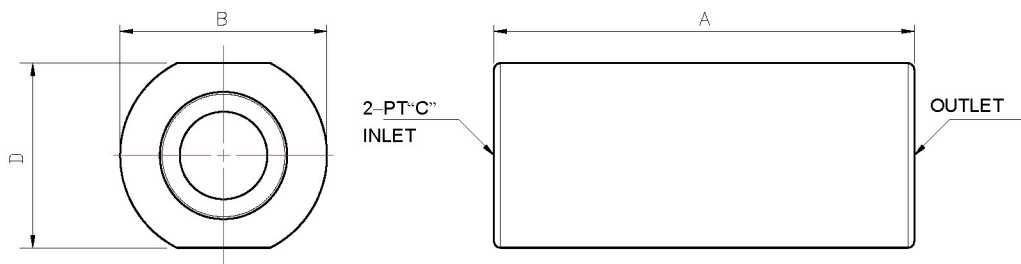
INSTALLATION DIMENSIONS

UNIT : mm(inch)

CI-T03/04/06/08



CI-T10



MODEL	A	B	C	D
CI-T03	70 (2.76)	26 (1.02)	3/8	--
CI-T04	82 (3.23)	29 (1.14)	1/2	--
CI-T06	91.5 (3.60)	35 (1.38)	3/4	--
CI-T08	112 (4.41)	51 (2.01)	1	--
CI-T10	132 (5.20)	65 (2.56)	1 1/4	58 (2.28)